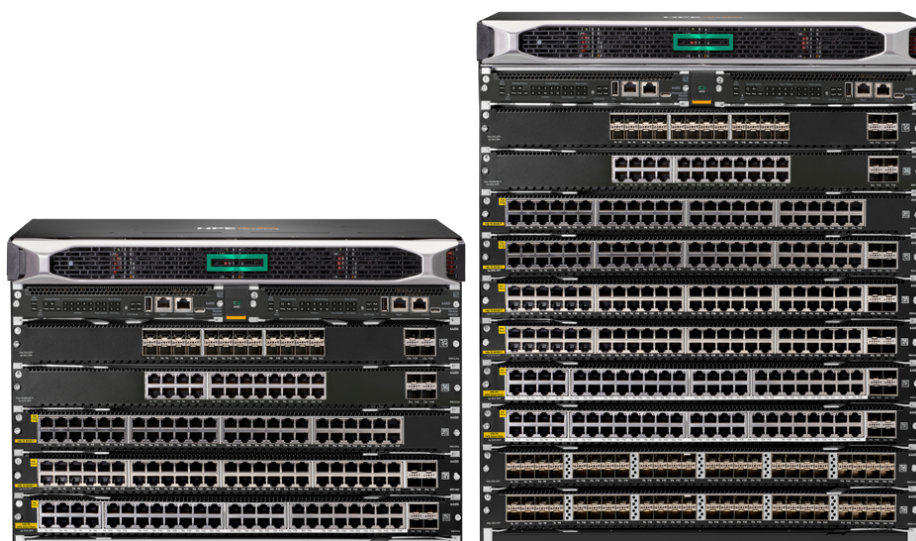


HPE Aruba Networking CX 6400 Switch Series



What's new

- High-performance modular Layer 3 switches with BGP, EVPN, VXLAN, VRF, and OSPF with robust security, MACsec encryption, and QoS while delivering up to 28 Tbps in non-blocking bandwidth.
- High availability with industry-leading VSX and redundant power supplies and fans.
- Full density HPE Smart Rate (1/2.5/5GbE) multi-gigabit, 60W PoE, and SFP+ modules.
- High-speed, non-blocking 1GbE, 10GbE, 25GbE, 40GbE, and 100GbE with intelligent monitoring, visibility and remediation with the Network Analytics

Overview

The HPE Aruba Networking CX 6400 Switch Series is a modern, flexible, and intelligent family of AOS-CX modular switches ideal for enterprise campus and data center deployments. With a cloud-centric design that combines a fully programmable OS with NAE, the CX 6400 extends industry-leading monitoring and troubleshooting across the network.

Powerful HPE Aruba Gen7 ASIC architecture delivers fast, non-blocking performance so your network is ready for tomorrow's unpredictable demands. HPE Aruba Networking Virtual Switching Extension (VSX) brings high availability and enables fast, non-disruptive upgrades. Support for HPE Aruba Networking Switch Multi-Edit Software and the HPE Aruba Networking CX Mobile App verify configurations are flawless and easy to deploy. This series offers 5 and 10-slot compact chassis, a choice of line rate interfaces including 25GbE, 100GbE, and full density 60W PoE with

Engine

- Manage via single pane of glass with HPE Aruba Networking Central across wired, wireless, and WAN.
- Dynamic Segmentation enables enhanced security and simple access for users and IoT.

HPE Smart Rate multi-gigabit Ethernet ideal for access, aggregation and core deployments.

Features

Automation and Analytics

The HPE Aruba Networking CX 6400 Switch Series delivers unparalleled visibility with built-in analytics for real-time monitoring and troubleshooting to help fix problems faster. The Network Analytics Engine automatically interrogates and analyzes events that can impact network health.

Advanced telemetry and automation provide the ability to easily identify and troubleshoot network, system, application, and security-related issues easily, through the use of Python agents and REST APIs.

The Time Series Database (TSDB) stores configuration and operational state data, making it available to quickly resolve network issues.

High Availability and Performance

The HPE Aruba Networking CX 6400 Switch Series uses a fully distributed architecture with HPE Aruba Gen7 ASICs that deliver very low latency, increased packet buffering, and adaptive power consumption. All switching and routing are wire-speed to meet the demands of bandwidth-intensive applications.

Features high speed, non-blocking 1GbE, 10GbE, 25GbE, 40GbE, and 100GbE for scalable connectivity.

The ability to maintain a synchronous state across dual control planes allows a simplified carrier-class high-availability solution called HPE Aruba Networking Virtual Switching Extension (VSX) that enables a distributed architecture, which is available during upgrades or control plane events.

High performance and versatile platform supports non-blocking 1GbE, 10GbE, 25GbE, 40GbE, and 100GbE connections, and high density connectivity for aggregation with up to 480 ports of HPE Smart Rate multi-gigabit (1/2.5/5GbE) with 60W PoE for a total of 28,880W of PoE.

Smarter Segmentation

The HPE Aruba Networking CX 6400 Switch Series supports HPE Aruba Networking Dynamic Segmentation that automatically applies and enforces user, device, and application-aware policies on HPE Aruba Networking wired and wireless infrastructures.

Automated device profiling, role-based access control, and Layer 7 firewall features deliver enhanced visibility and performance for a better overall experience for both IT and end-users alike.

Switch-to-switch tunnels enable scalable multi-tenancy support with VXLAN to VRF mapping, while allowing policy application via user roles.



Technical specifications

HPE Aruba Networking CX 6400 Switch Series

Ports	10 I/O module slots, maximum, depending on model
Memory and processor	Management module: Quad Core ARM Cortex™ A72 @ 1.8GHz, 16GB DDR4 ECC memory, 32GB eMMC Flash memory Line card: Dual Core ARM Cortex™ A72 @ 1.8GHz, 4GB DDR4 memory Line card: 8MB shared packet buffer memory(R0X38A, R0X39A, R0X40A, R0X41A, R0X42A, R0X43A), 32MB shared packet buffer memory (R0X44A, R0X45A)
Throughput	Up to 20 Bpps, depending on model and configuration
Switching capacity	Up to 28 Tbps, depending on model and configuration
PoE capability	Available IEEE 802.3af, 802.3at, 802.3bt PoE support, depending on model and configuration
Management features	HPE Aruba Networking AirWave HPE Aruba Networking Central Network Management HPE Aruba Networking Switch Multi-Edit Software HPE Aruba Networking CX Mobile App Command-line interface SNMP v2c/v3 RMON
Input voltage	110-127 / 200-240 VAC (power supplies sold separately)
Product dimensions (metric)	52.88 x 44.26 x 44.85 cm, maximum, depending on model
Weight	53.5 kg, maximum, depending on model



For additional technical information, available models and options, please reference the [QuickSpecs](#)

HPE Aruba Networking Services

HPE Aruba Networking services simplify and accelerate the network technology lifecycle, enabling your network to scale with better predictability and cost-effectiveness. Whether you operate your own network and need to improve your IT efficiencies, or you want to offload some of the burden, we have the services you need to reach your goals.

Learn more about what HPE Services - Aruba Networking has to offer at: <https://www.hpe.com/edge/services>

Support Services

Our support portfolio provides the essential support elements as well as proactive and preventive features to help you improve your team's productivity and get the most from your network. Our support customers benefit from faster issue resolution, simplified operations and efficiencies, and reduced network issues.

Professional Services

With deep intellectual capital and purpose-built tools, our team delivers a range of standard and custom professional services designed to accelerate your value from HPE Aruba Networking technology.

Project based services include: Annual subscription services include:

- Planning, audit, and assessment
- Architecture review and design
- Deployment, migration, and knowledge transfer
- Network optimization
- Intelligent Operations
- Customer Experience Management

Our [Education Services](#) allow your team to come up to speed quickly.

HPE GreenLake for Networking

Our NaaS solution, is part of the HPE GreenLake services family, and simplifies network operations, accelerates equipment handling, and increases the value of your HPE Aruba Networking solution. If you need expert guidance and automation-based operations for your team, please explore our NaaS approach through HPE GreenLake for Networking.

Make the right purchase decision.
Contact our presales specialists.



Contact us

Visit [ArubaNetworks.com](https://www.arubanetworks.com)

